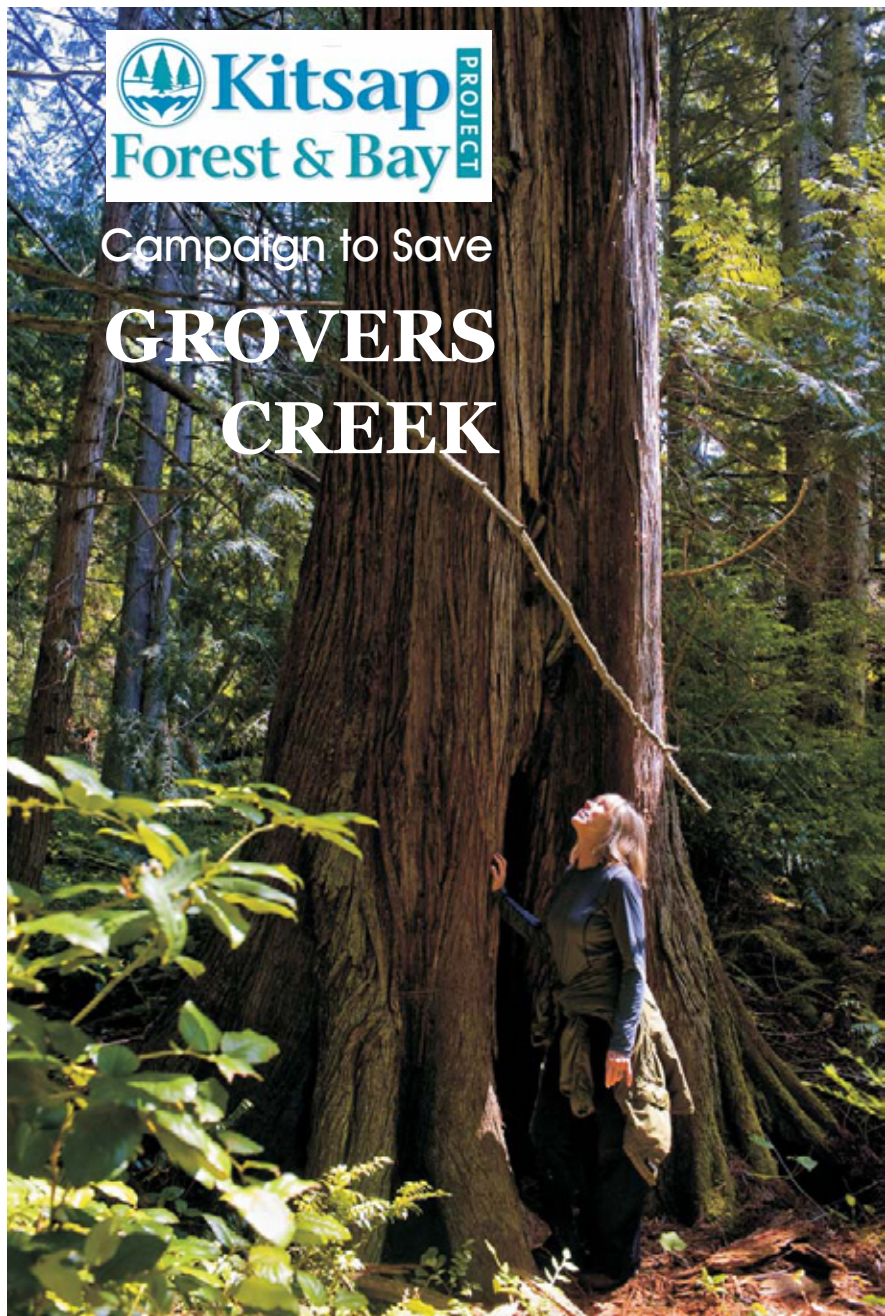




Campaign to Save

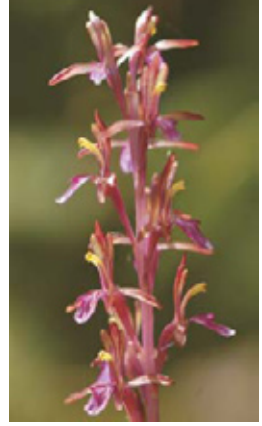
GROVERS CREEK



Fundraising Deadline: May 31, 2015

GROVERS CREEK CAMPAIGN

A campaign is underway to conserve Grovers Creek and the surrounding lush forests and wetlands that nourish North Kitsap's Miller Bay. This special place has giant trees and is home to an abundance of wildlife. It also will be a critical link in the Sound to Olympics Trail. A coalition of community partners known as the Kitsap Forest & Bay Project invites you to join us in purchasing 270 acres that will be protected forever, under the careful stewardship of Great Peninsula Conservancy, as the Grovers Creek Preserve.



OUR OPPORTUNITY

The land will be purchased from several willing landowners, with the largest parcel (180 acres) owned by a single company. Terms of our agreement with the company require that the purchase be completed by March 21, 2015. Project partners have set our sights on raising the funds needed to purchase the remaining 90 acres by May 31, 2015. Public grants and private donations totaling \$1.7 million already have been raised. The Grovers Creek Campaign seeks to raise the remaining \$400,000. Your help is needed now.



NATURAL SPLENDORS OF GROVERS CREEK



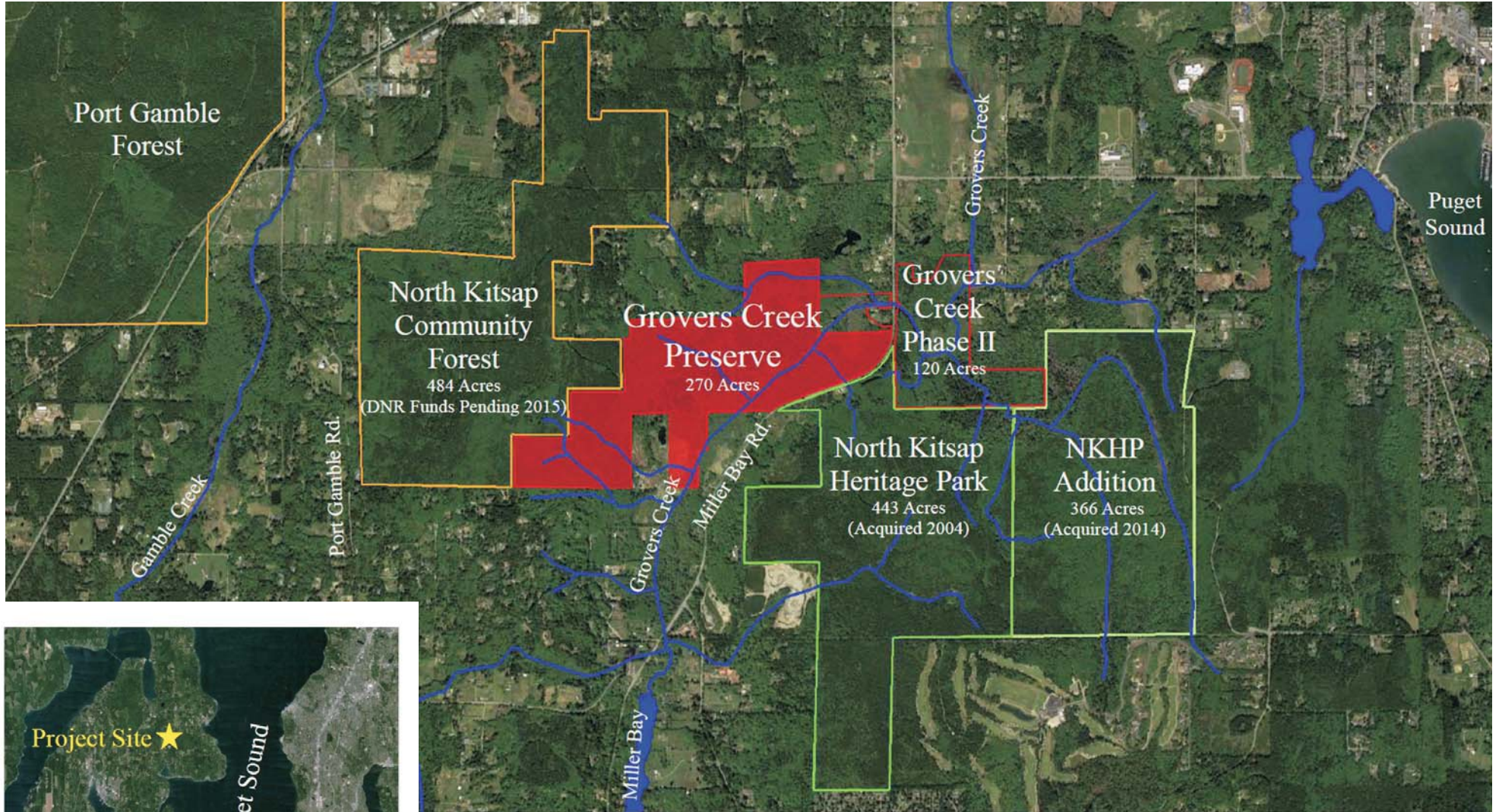
Explore the Grovers Creek landscape and you'll find a rare grove of 200-year-old Sitka spruce, hemlock, cedar, Douglas fir and grand fir. You'll also find a peat bog that gives a spring to your step as you cross its hummocks and skirt its pools. You'll cross Grovers Creek on a fallen log and marvel at the handiwork of beavers. You'll struggle to get through wetland thickets of alder and salmonberry.

These diverse habitats support over 60 bird species; host threatened steelhead as well as coho and cut throat; and provide a home for beaver, black bear, mink, otter, salamanders and frogs. Our hope is that a pair of marbled murrelets, a small threatened seabird that lays its single egg high up in an old growth conifer, might someday nest in one of Grovers Creek's ancient spruce trees.

Only a mile downstream from this mosaic of habitats, Grovers Creek flows into tidal Miller Bay. The expanse of wetlands spreading out from the creek ensures that the water entering the bay is clean and flows year round. Each fall as the rains return, salmon make their way up Grovers Creek and the bears return to feed upon their spent carcasses. It's as if time has stood still.



GROVERS CREEK MAP



OPEN SPACE & TRAIL CORRIDOR

Groves Creek Preserve is at the center of a forest corridor of nearly 1 700 acres spanning the Kitsap Peninsula. To the east lies Kitsap County's North Kitsap Heritage Park. The land to the west is proposed to be protected as the North Kitsap Community Forest. Farther west, the Port Gamble Forest soon may be protected for trails and wildlife habitat. Together, these conservation properties will conserve a significant open space corridor and protect land critical to a future Sound to Olympics Trail.

GROVERS CREEK CAMPAIGN PLAN

Efforts by Kitsap Forest & Bay Project partners to save Grovers Creek began early in 2012. Since that time, \$1,700,000 has been raised toward an estimated project cost of \$2,100,000. As the May 31, 2015 deadline approaches for completing the fundraising effort, a last push is underway. Under the leadership of Great Peninsula Conservancy and with the participation of many Kitsap Forest & Bay Project partners, the Grovers Creek Campaign seeks to close the remaining funding gap. The campaign will build on the earlier successful campaign that helped Kitsap County conserve the Port Gamble Bay Shoreline in February 2014. It will pave the way for a subsequent Kitsap County campaign to conserve the Port Gamble Forest.

GROVERS CREEK CAMPAIGN BUDGET

Funds Committed		Expenses (estimated)	
Public Grants	\$1,375,000	Land Purchase	\$1,750,000
Private Donations	\$ 325,000	Project Costs	\$ 220,000
Total Committed	\$1,700,000	Land Stewardship Campaign	\$ 100,000 \$ 30,000
Funds Needed Now \$ 400,000			
Campaign Goal	\$2,100,000	Total Expenses	\$2,100,000

HELP SAVE GROVERS CREEK

The Grovers Creek Campaign is a significant funding challenge for Kitsap Forest & Bay Project partners, but one we accept with enthusiasm. The community has rallied in support of this visionary land conservation initiative before and we are sure you will be there again for this next critical phase. Your gift will help protect the big trees, bears and salmon of Grovers Creek for all time. Your gift also will help realize the dream of a Sound to Olympics Trail connecting people from Kingston to Port Gamble.

CAMPAIGN COMMITTEE

Chair: Wes Larson*

Sound West Group

Honorary Co-Chair: Christine Rolfes

WA State Senator

Linda Berry-Maraist

North Kitsap Trails Association

Anne Blair

Mayor, City of Bainbridge Island

Michelle Connor

Forterra

Dick D'Archangel*

Friends of Miller Bay

Debbie Engel*

Indianola

Becky Erickson

Mayor, City of Poulsbo

Leonard Forsman

Chairman, Suquamish Tribe

Rob Gelder

Commissioner, Kitsap County

Leslie Peterson

Liberty Bay Bank

Phil Rockefeller

Bainbridge Island

Sidnie Shaffer*

Bremerton

Ken Shawcroft

Hansville Greenway Association

David Smith

Central Highlands Builders

Sandra Staples-Bortner

Great Peninsula Conservancy

Lynn Sudduth

Indianola

Jeromy Sullivan

Chairman, Port Gamble S'Klallam Tribe

Clarke Whitney

Clarke Whitney CPAs

Judy Willott

Kitsap Audubon Society

*Board Member, Great Peninsula Conservancy

PLEASE MAKE A CONTRIBUTION TODAY!

Fundraising Deadline: May 31, 2015

Your contribution may be made by check, credit card, or by donation of stock. Please make your check to 'Great Peninsula Conservancy', with 'Grover's Creek Campaign' in the memo line. Donations are tax deductible to the full extent allowed by law.



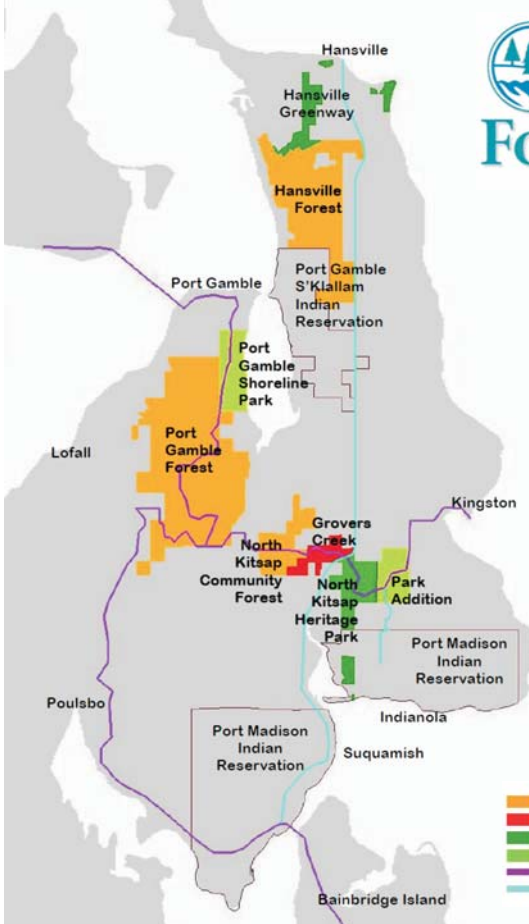
423 Pacific Avenue, Suite 401
Bremerton, WA 98337

Great Peninsula Conservancy is a nonprofit land trust working to preserve forever the natural habitats, rural landscapes, and open spaces of the Great Peninsula, a region encompassing Kitsap, Mason, and western Pierce counties, WA.

360-373-3500 – mary@greatpeninsula.org – www.greatpeninsula.org

KITSAP FOREST & BAY CAMPAIGN

A coalition of community partners known as the Kitsap Forest & Bay Project invites you to join us in a visionary initiative to conserve 6,800 acres of forest on Puget Sound's Kitsap Peninsula.



**Save the Land & Trails!
Before it's too late!**
www.kitsapforestbay.org

- Kitsap Forest & Bay Project
- Current Campaign – Grovers Creek
- County Parks
- Kitsap Forest & Bay Project Success
- Sound to Olympics Trail – Suggested Route
- Planned Regional Bicycle Routes

Phase I: Port Gamble Shoreline Park: **Success!** (535 acres)

Phase II: North Kitsap Heritage Park Addition: **Success!** (366 acres)

Phase III: Grovers Creek Preserve: **Donate Today!** (270 acres)

Phase IV: Port Gamble Forest: **Funding Strategy Coming in 2015** (3355 acres)

Phase V: North Kitsap Community Forest: **DNR Funds Pending 2015** (484 acres)

Phase VI: Hansville Forest: **TBD** (1778 acres)

Photo Credits: Joe Walsh (cover)

Other Photos by Randena Walsh, Joe Walsh, Don Willott, Michael Yadrick